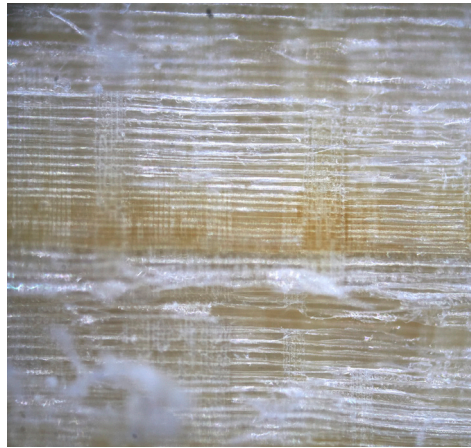


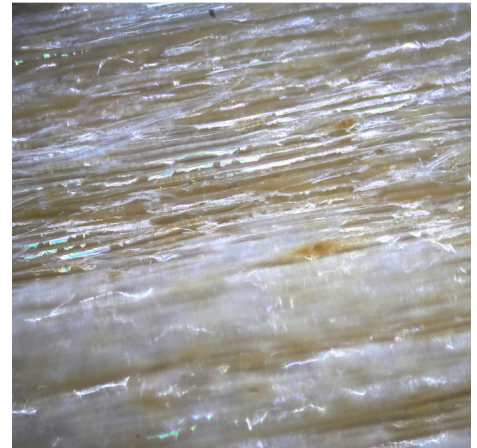
TONE WOOD

It is not easy being green
When you are a fir tree in
the mountains.



Tone wood

Dutch Violin



Your daily spruce

Grain, Twist & Stress

Wood is not as straight forward as you might think.
A lot of trees do not grow straight up, they twist or undulate during the growth.
This is why perfect sound wood should be split.
That way you get your wood more parallel to the grain.
You split the wood in the direction of the growth; from root to top.
That is the theory.
During their life, trees in the mountains are subjected to a lot of variable forces: storms, loads of snow etc.
On a slope this means that these forces do not balance out.
So wood, after the harvest, is a pre stressed material.
Once balancing a part of a heavy tree, now, no weight at all.
That stress may or may not align with the twist or grain...
The stress will help determine the direction of the split.
This is why all pieces of wood sound different.
Using two sound boards helps to even out those differences.



This split aligns nicely



This split not so much